

A

B

C

D

E

F

1

1

2

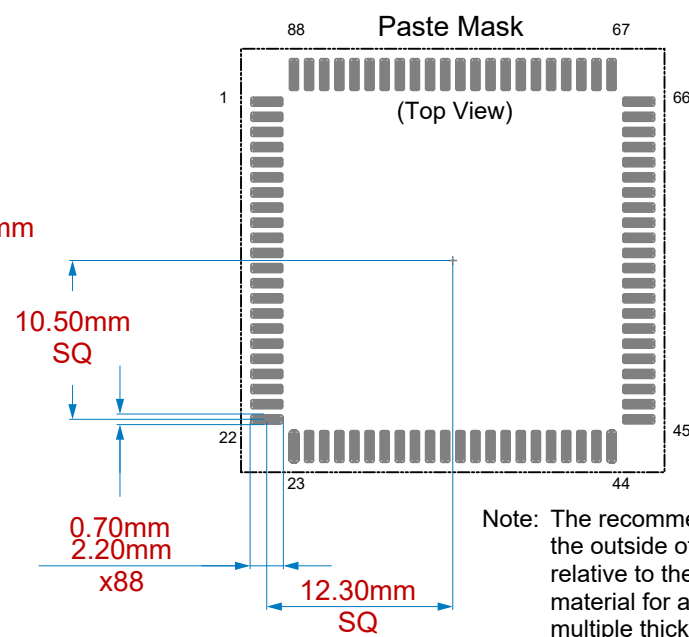
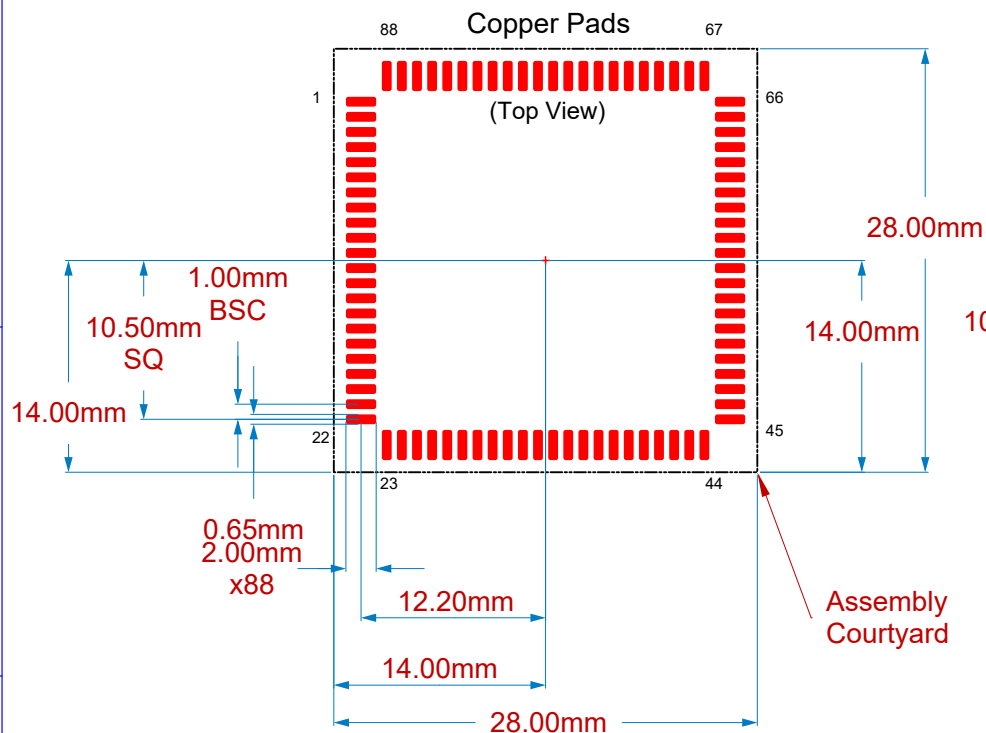
2

3

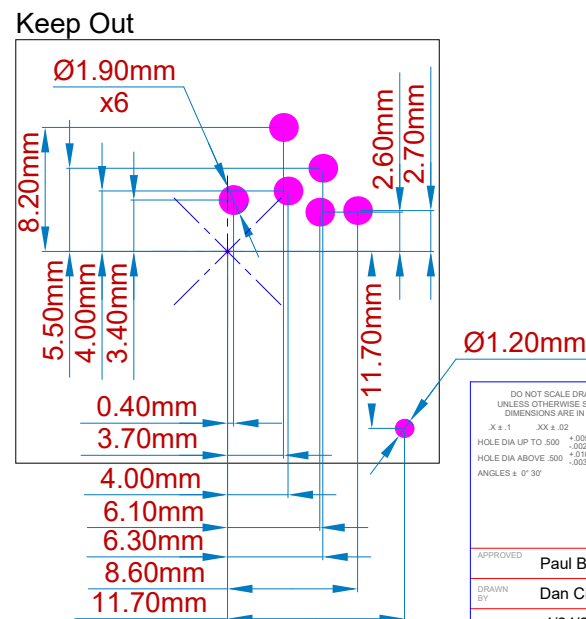
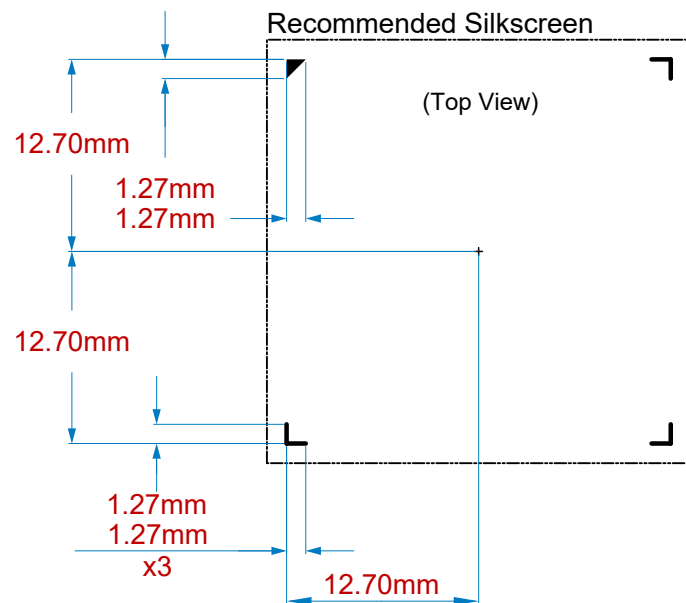
3

4

4



Note: The recommended paste mask is biased slightly to the outside of the footprint and is slightly oversized relative to the pad dimensions to provide sufficient material for an acceptable fillet, without requiring a multiple thickness stencil for the overall assembly.



DO NOT SCALE DRAWING  
UNLESS OTHERWISE SPECIFIED  
DIMENSIONS ARE IN INCHES  
X ± .1 XX ± .02 XXX ± .010  
HOLE DIA UP TO .500 +.005  
HOLE DIA ABOVE .500 +.010  
ANGLES ± 0° 30'

**PROPRIETARY  
INFORMATION**

NOT TO BE COPIED, USED, OR  
DISCLOSED WITHOUT WRITTEN  
PERMISSION FROM  
**NETBURNER**



18655 W BERNARDO DR, STE 260  
SAN DIEGO, CA 92127  
(858) 558-0293

TITLE  
**CUSTOMER DRAWING  
Footprint for SOMRT1061  
(Reflow)**

APPROVED  
DRAWN BY  
DATE

Paul Breed  
Dan Ciliske  
4/24/2024

**CAD/CAM DRAWING  
DO NOT MANUALLY  
REVISE OR UPDATE**

SIZE	FSCM	DRAWING NUMBER	REV
A3		851462	A

SCALE 2:1 SHEET 1 OF 1

A

B

C

D

E

F

A

B

C

D

E

1

2

3

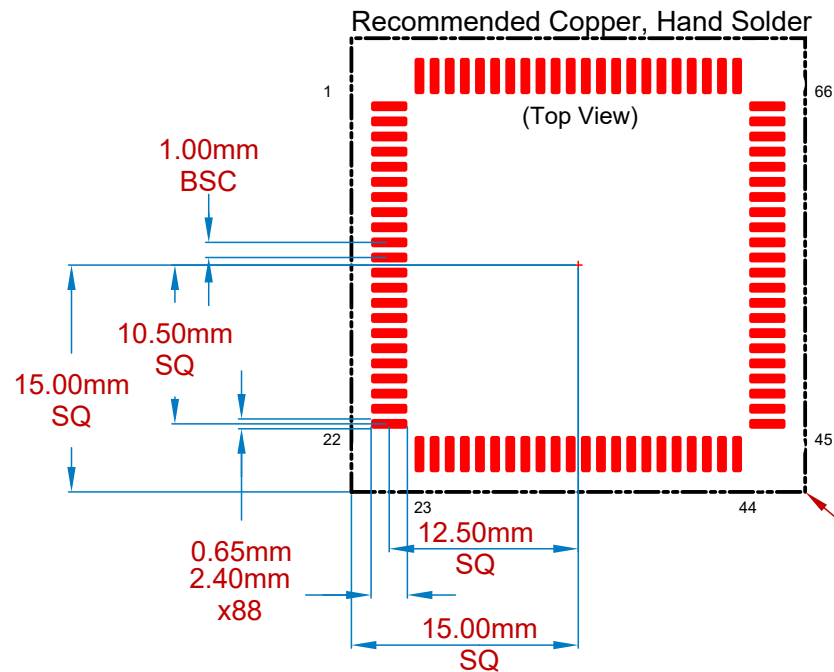
4

1

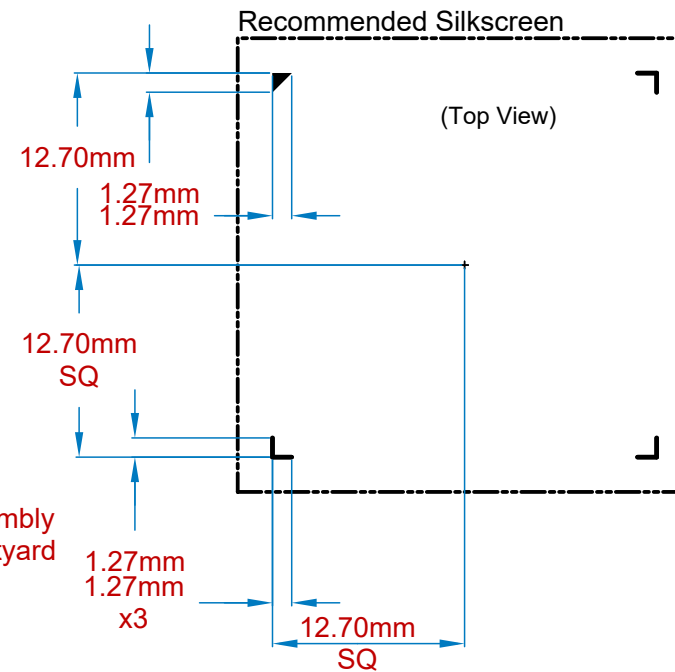
2

3

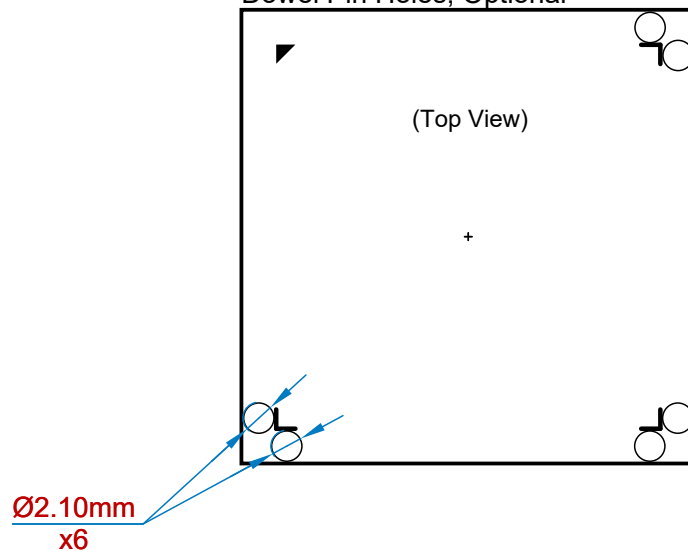
4



Assembly  
Courtyard




### Dowel Pin Holes, Optional



### Dowel Pin Notes:

1. Dowel Pin Holes are optional in whole or part.
2. Dowel pins will assist with registration of the SOM to pad during soldering.
3. When used, It is expected that either:
  - The assembly will be placed on top of a fixture with pins protruding up from the bottom of the carrier PCB.
  - The SOM will be placed on the carrier and an alignment assembly will be placed on top of the SOM with the dowels protruding down from above the assembly.

<div>DO NOT SCALE DRAWING UNLESS OTHERWISE SPECIFIED DIMENSIONS ARE IN INCHES</div> <div>X ± .1    XX ± .02    XXX ± .010</div> <div>HOLE DIA UP TO .500    +.005                                   - .002</div> <div>HOLE DIA ABOVE .500    +.010                                   - .003</div> <div>ANGLES ± 0° 30'</div>		<div>PROPRIETARY INFORMATION</div> <div>NOT TO BE COPIED, USED, OR DISCLOSED WITHOUT WRITTEN PERMISSION FROM</div> <div>NETBURNER</div>		<div></div> <div>18655 W BERNARDO DR, STE 260 SAN DIEGO, CA 92122 (858) 558-0299</div>	
		<div>CAD/CAM DRAWING DO NOT MANUALLY REVISE OR UPDATE</div>		TITLE    CUSTOMER DRAWING Footprint for SOMRT1061 (Hand Soldered)	
APPROVED    Paul Breed				SIZE    A4	REV    A
DRAWN BY    DanCiliske				FSCM	DRAWING NUMBER    851463
DATE    4/24/2024		SCALE    2:1		SHEET    1    OF    1	


A

B

C

D

E

<div>DO NOT SCALE DRAWING UNLESS OTHERWISE SPECIFIED DIMENSIONS ARE IN INCHES</div> <div>X x .1      XX x .02      XXX x .010</div> <div>HOLE DIA UP TO .500    +.005                                      - .002</div> <div>HOLE DIA ABOVE .500    +.010                                      - .003</div> <div>ANGLES ± 0° 30'</div>	<div>PROPRIETARY INFORMATION</div> <div>NOT TO BE COPIED, USED, OR DISCLOSED WITHOUT WRITTEN PERMISSION FROM NETBURNER</div>	<div>18655 W BERNARDO DR, STE 260 SAN DIEGO, CA 92127 (858) 558-0293</div>																
<div>APPROVED PaulBreed</div> <div>DRAWN BY DanCiliske</div> <div>DATE 4/24/2014</div>	<div>CAD/CAM DRAWING DO NOT MANUALLY REVISE OR UPDATE</div>	<table><tr><td>TITLE</td><td colspan="3">CUSTOMER DRAWING Footprint for SOMRT1061 (Carrier Headers)</td></tr><tr><td>SIZE</td><td>FSOM</td><td>DRAWING NUMBER</td><td>REV</td></tr><tr><td>A4</td><td></td><td>851464</td><td>A</td></tr><tr><td colspan="2">SCALE    2:1</td><td colspan="2">SHEET#    1 OF    1</td></tr></table>	TITLE	CUSTOMER DRAWING Footprint for SOMRT1061 (Carrier Headers)			SIZE	FSOM	DRAWING NUMBER	REV	A4		851464	A	SCALE    2:1		SHEET#    1 OF    1	
TITLE	CUSTOMER DRAWING Footprint for SOMRT1061 (Carrier Headers)																	
SIZE	FSOM	DRAWING NUMBER	REV															
A4		851464	A															
SCALE    2:1		SHEET#    1 OF    1																