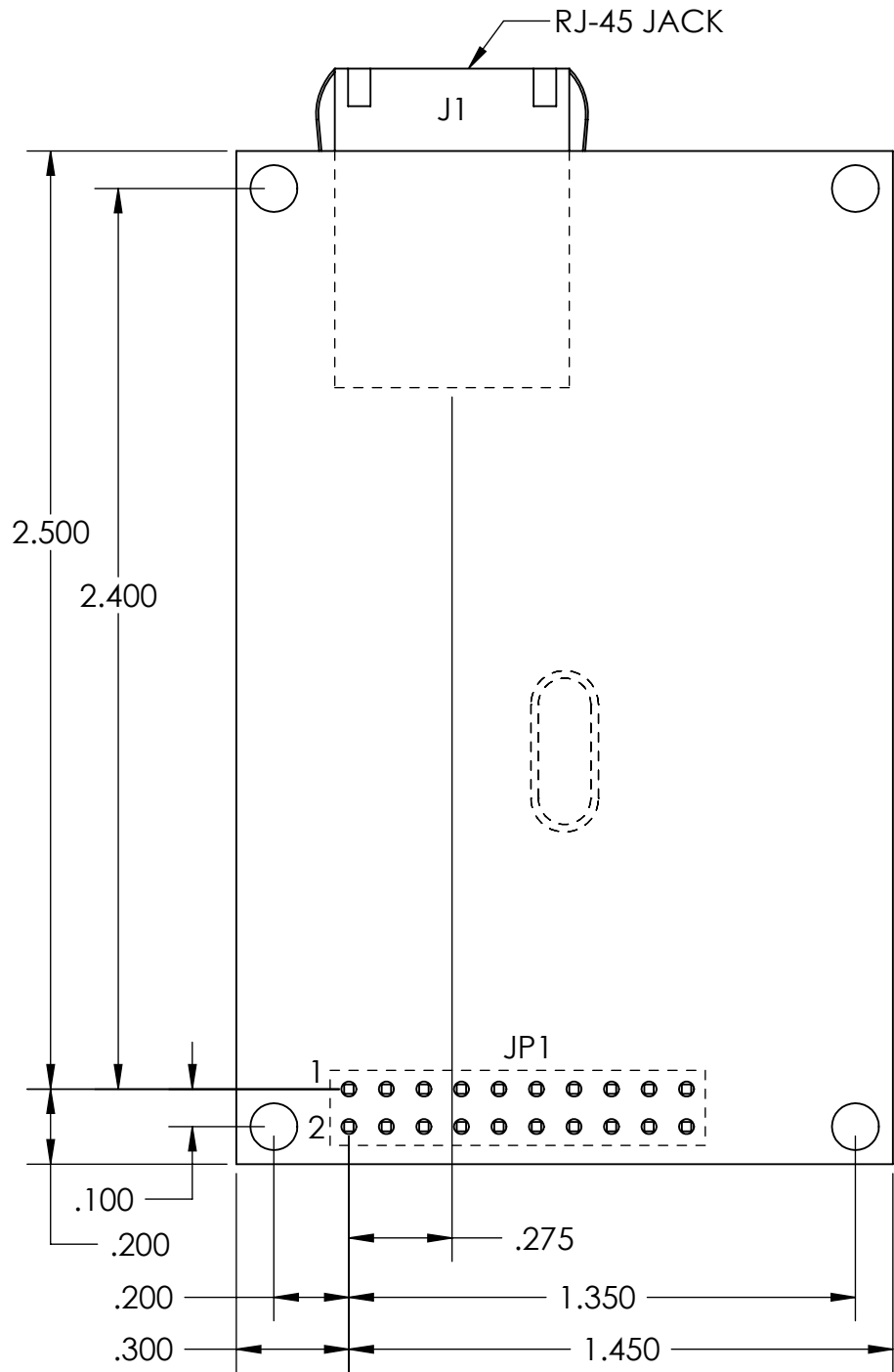


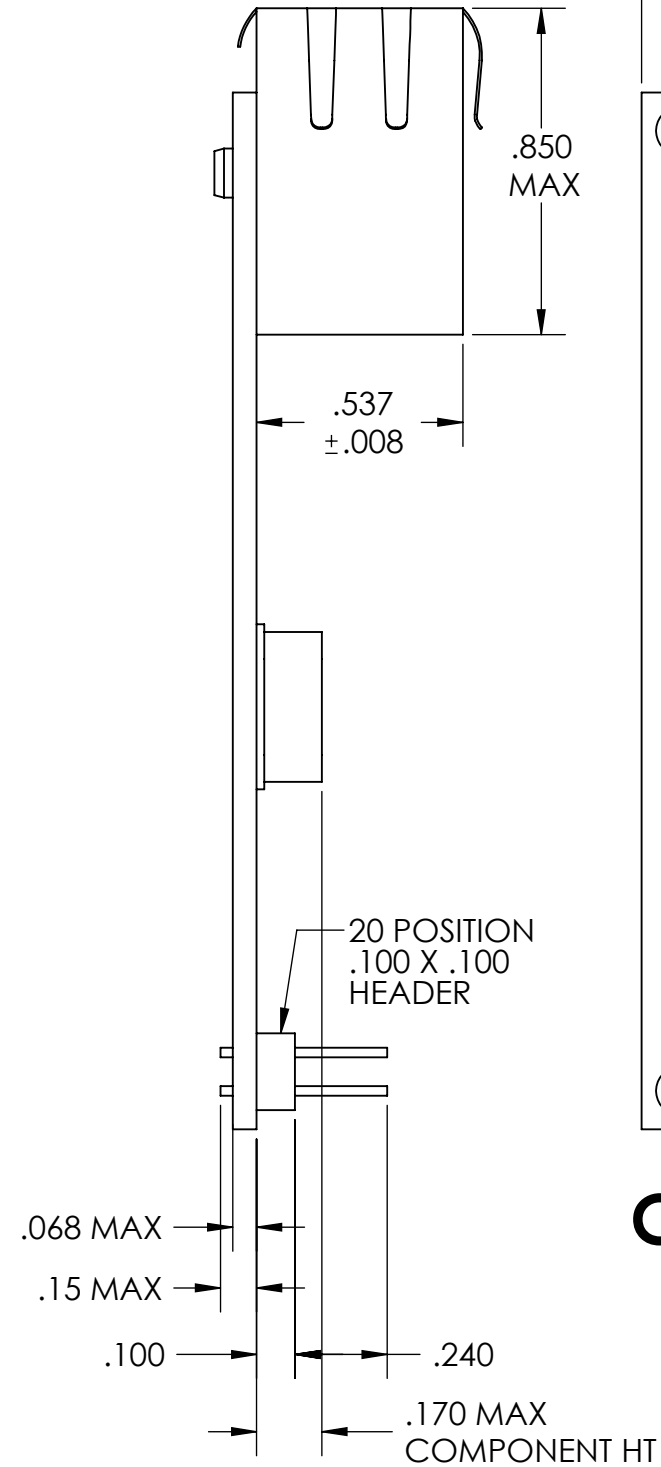
NOTES: UNLESS OTHERWISE SPECIFIED

REVISIONS				
ZONE	REV	DESCRIPTION	DATE	APVD
	D	REVISED AND REDRAWN	17JUL10	J. PETER

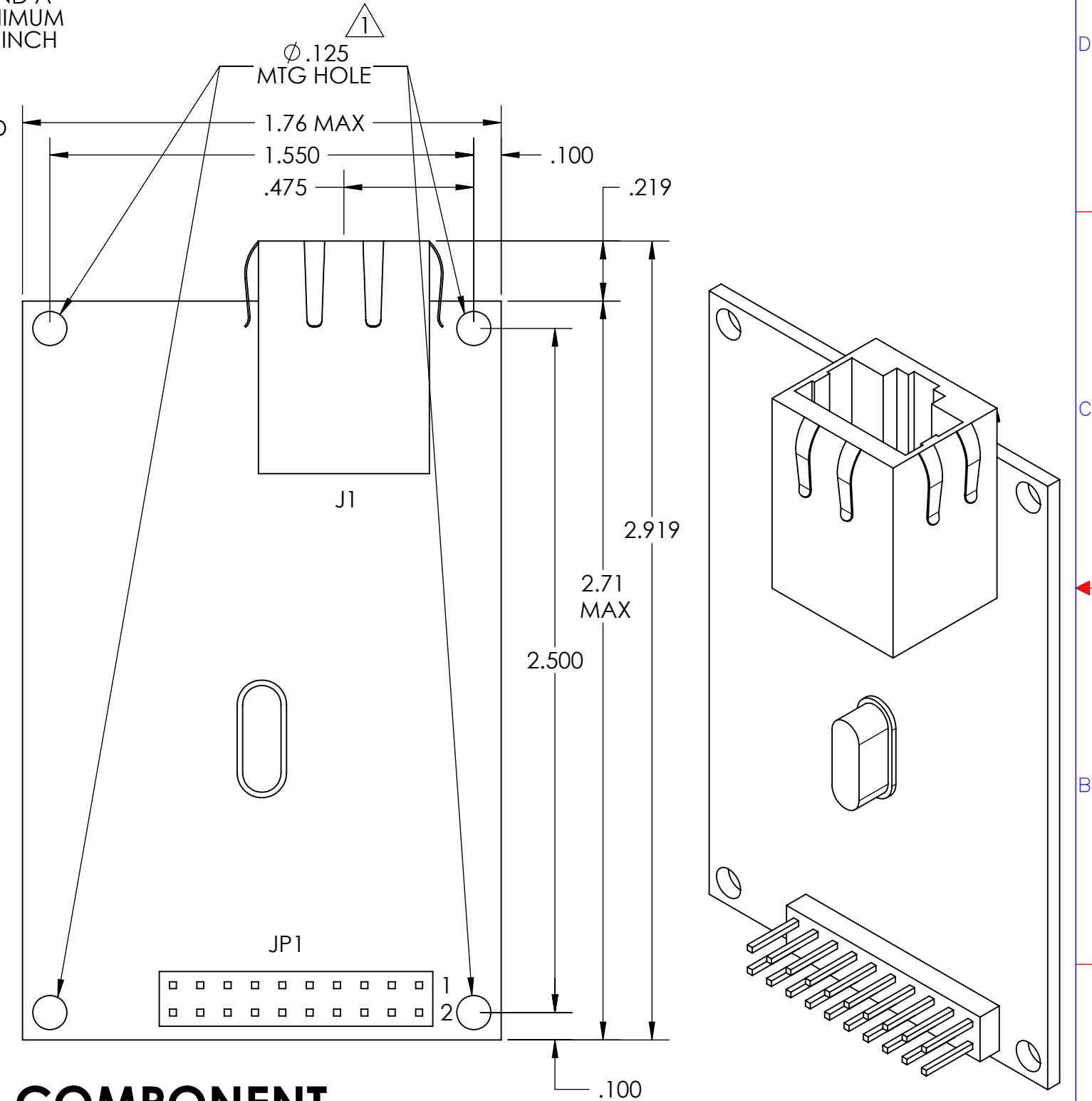
1 OPTIONALLY, USE 3/16 INCH DIA #4 INSULATED STANDOFFS OR SPACERS FOR MOUNTING. FOR SOLDER PIN CLEARANCE, THE MODULE NEEDS .09 INCH MINIMUM DISTANCE BETWEEN THE MODULE PCB AND A PANEL ON THE SOLDER SIDE. TO CLEAR THE RJ-45 CONNECTOR, THE MODULE NEEDS .55 INCH MINIMUM DISTANCE BETWEEN THE MODULE PCB AND A MOTHERBOARD ON THE COMPONENT SIDE. USE .22 INCH DIA INSULATING WASHERS AND #4 PAN HEAD SCREWS TO MOUNT STANDOFFS OR SPACERS. APPLICATION EXAMPLE ON SHEET 2 SHOWS USE OF CABLE ON CONNECTOR JP1. APPLICATION EXAMPLE ON SHEET 3 SHOWS USE OF MOTHERBOARD AND ALLOWS COMPONENT HEIGHT OF .33 INCH UNDER THE MODULE. APPLICATION EXAMPLE ON SHEET 4 SHOWS USE OF MOTHERBOARD WITH MINIMUM ASSEMBLY HEIGHT, NOT ALLOWING COMPONENTS UNDER THE MODULE.



SOLDER SIDE OF MODULE



COMPONENT SIDE OF MODULE



DO NOT SCALE DRAWING UNLESS OTHERWISE SPECIFIED DIMENSIONS ARE IN INCHES TOLERANCES:

.X ± .1	.XX ± .02	.XXX ± .010
HOLE DIA UP TO .500	+.005	
HOLE DIA ABOVE .500	-.003	
ANGLES ≠ 0°/30°	MACHINED SURFACES	

THIRD ANGLE PROJECTION

APPROVED: _____

DRAWN BY: J. PETER 17JUL10

PROPRIETARY INFORMATION

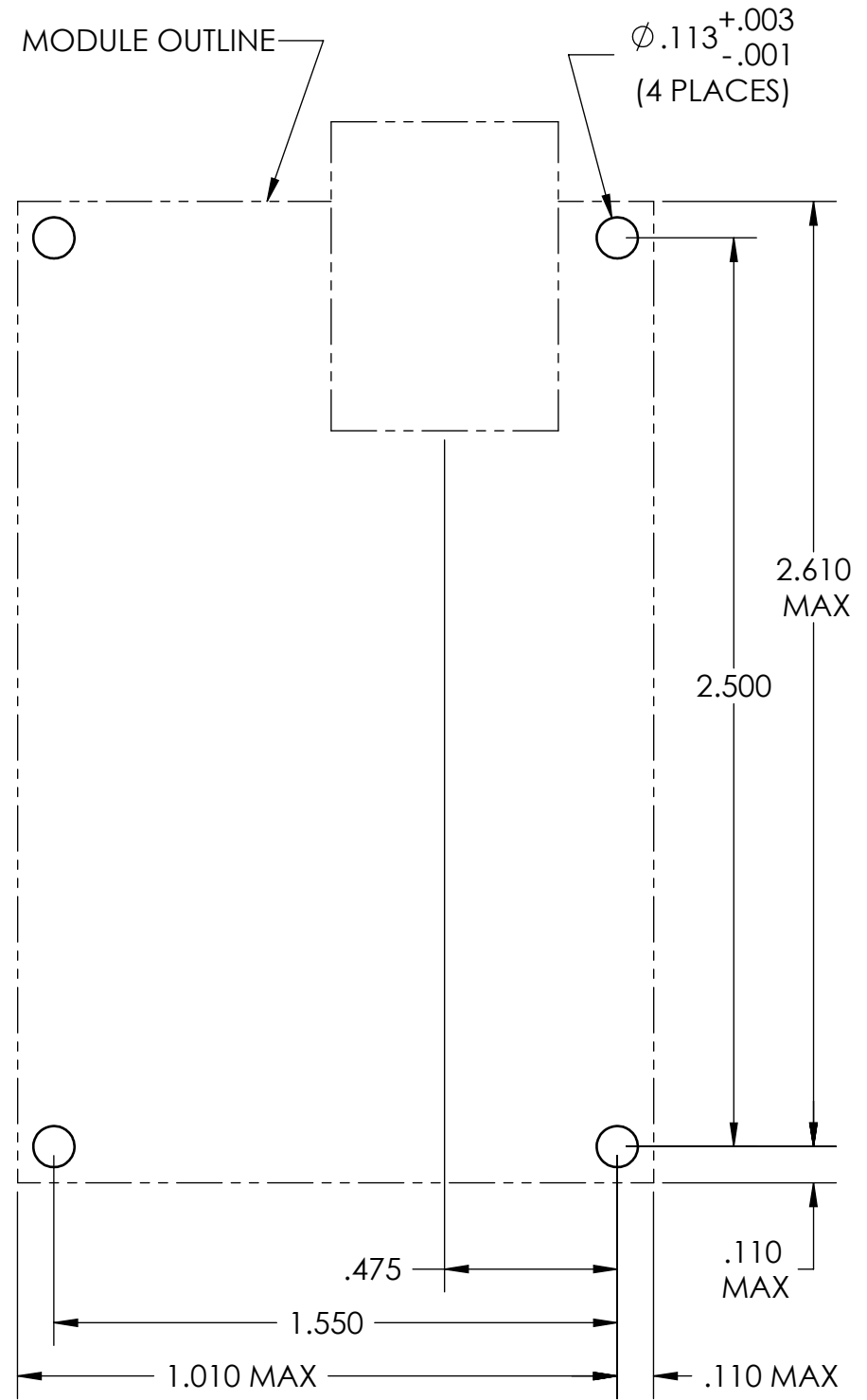
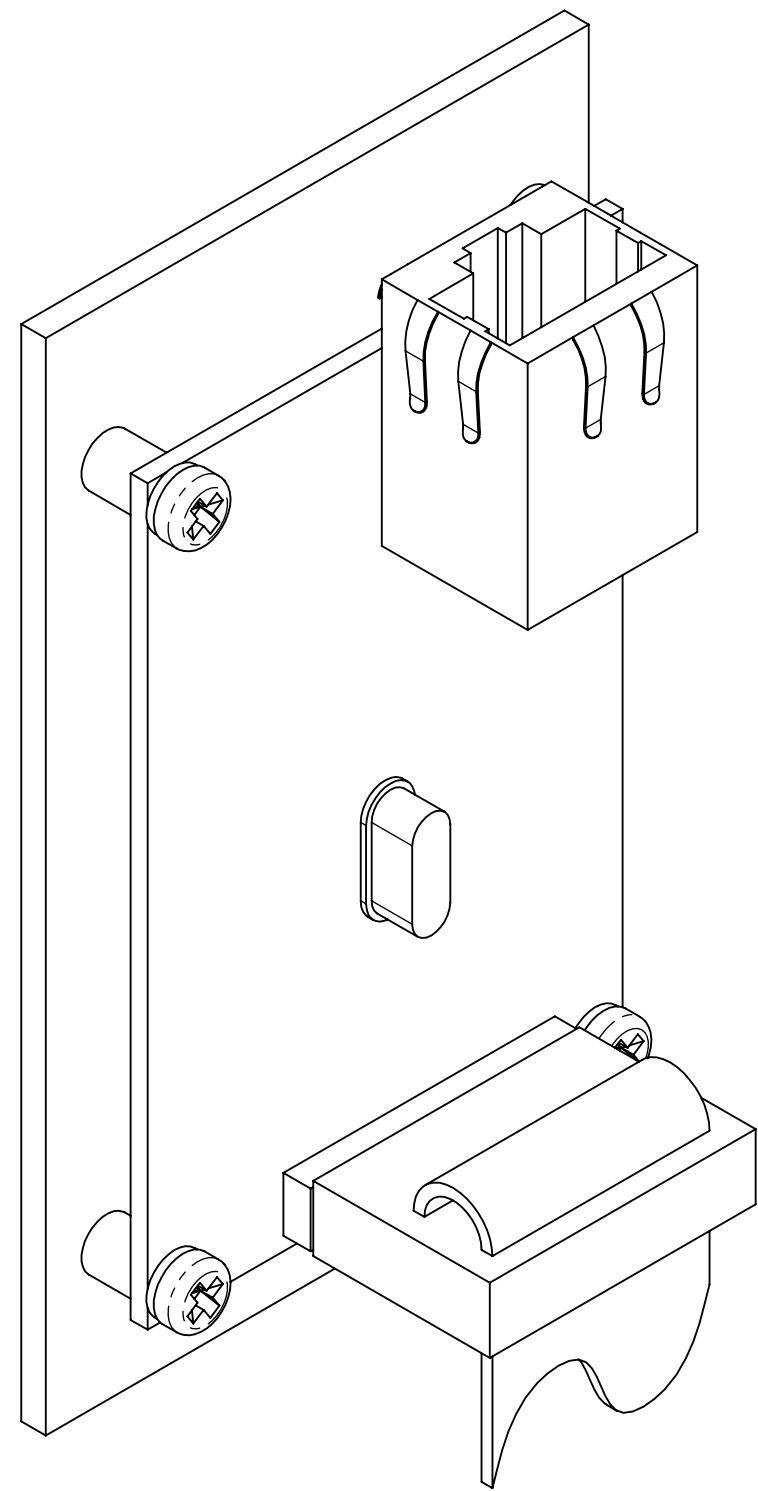
NOT TO BE COPIED, USED, OR DISCLOSED WITHOUT WRITTEN PERMISSION FROM NETBURNER

CAD/CAM DRAWING DO NOT MANUALLY REVISE OR UPDATE

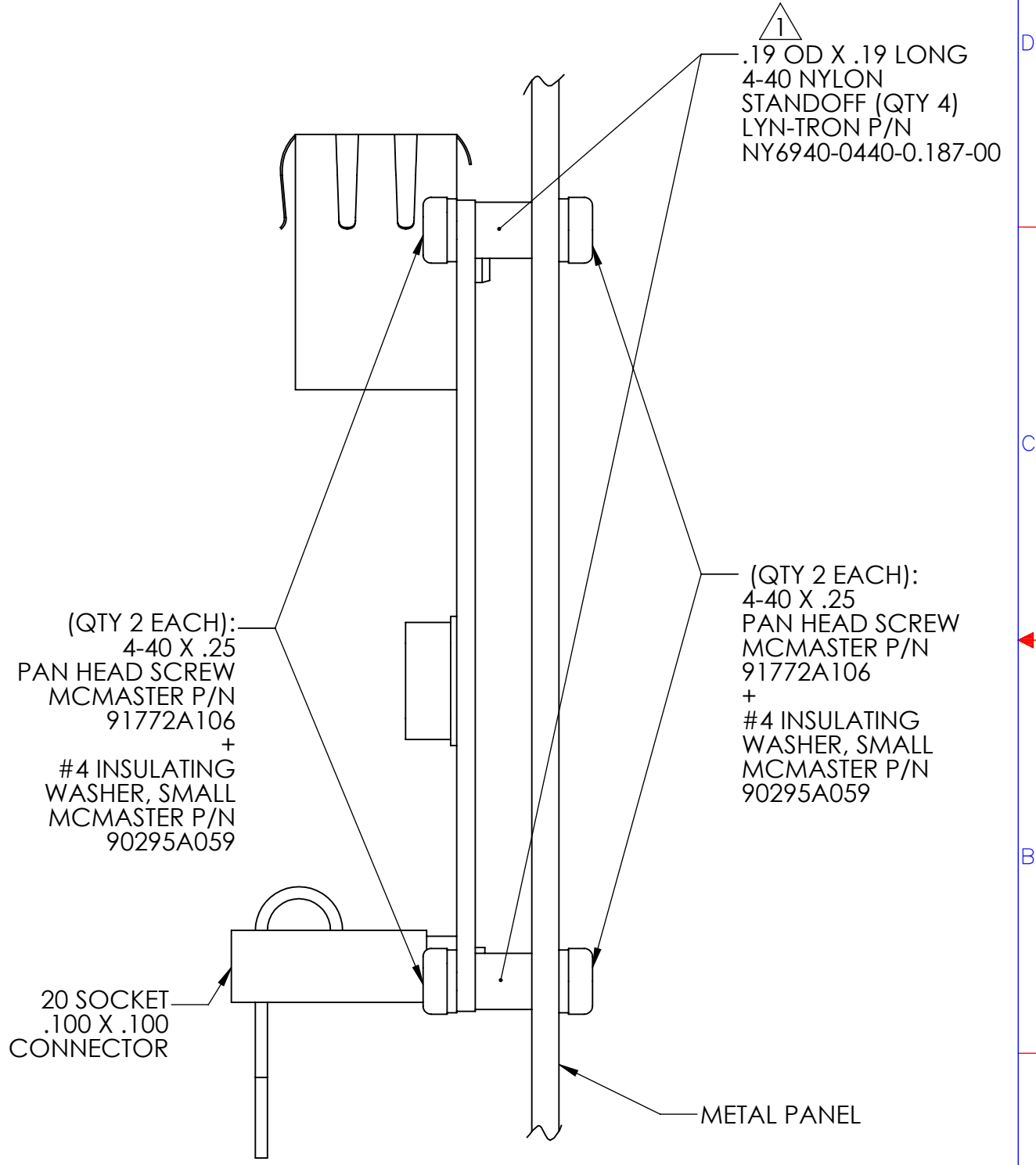
5405 MOREHOUSE DR., STE 200 SAN DIEGO, CA. 92121 (858) 558-0293		TITLE CUSTOMER DRAWING MODEL SB70LC-100IR	
SIZE D	FSCM	DRAWING NUMBER 850380	REV D
SCALE 1:1	SHEET 1 OF 3		

**APPLICATION SAMPLE 1
CABLES AT JP1 AND JP3, MODULE MOUNTED ON METAL PANEL**

D
C
B
A



**HOLE PATTERN
ON METAL PANEL**



PROPRIETARY INFORMATION NOT TO BE COPIED, USED, OR DISCLOSED WITHOUT WRITTEN PERMISSION FROM NETBURNER	5405 MOREHOUSE DR., STE 200 SAN DIEGO, CA. 92121 (858) 558-0293		
	TITLE: CUSTOMER DRAWING MODEL SB70LC-100IR		
CAD/CAM DRAWING DO NOT MANUALLY REVISE OR UPDATE	SIZE: B SCALE: 2:1	FSCM: [] DRAWING NUMBER: 850380	REV: D SHEET 2 OF 3

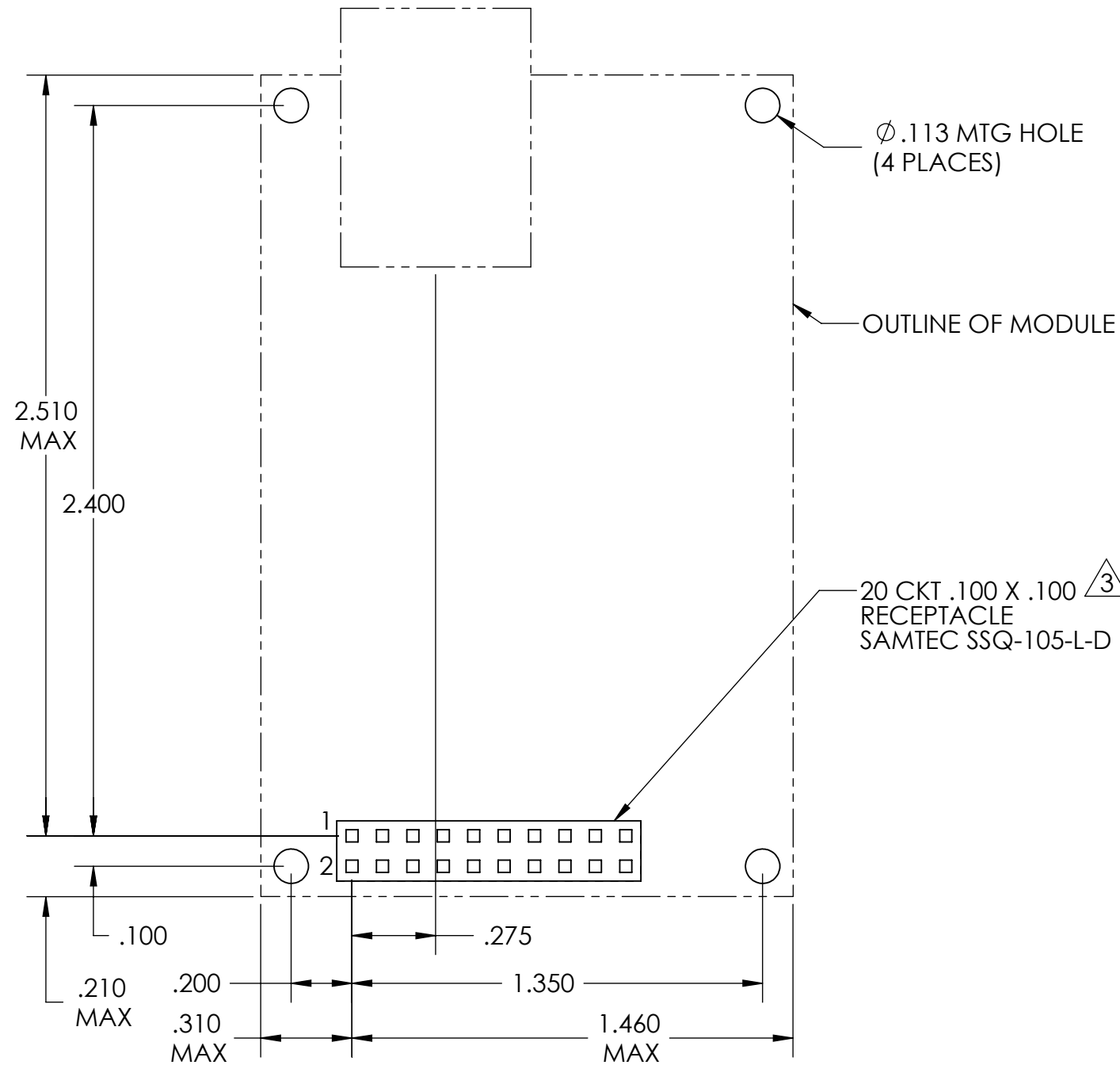
8 7 6 5 4 3 2 1

NOTES (CONT'D):

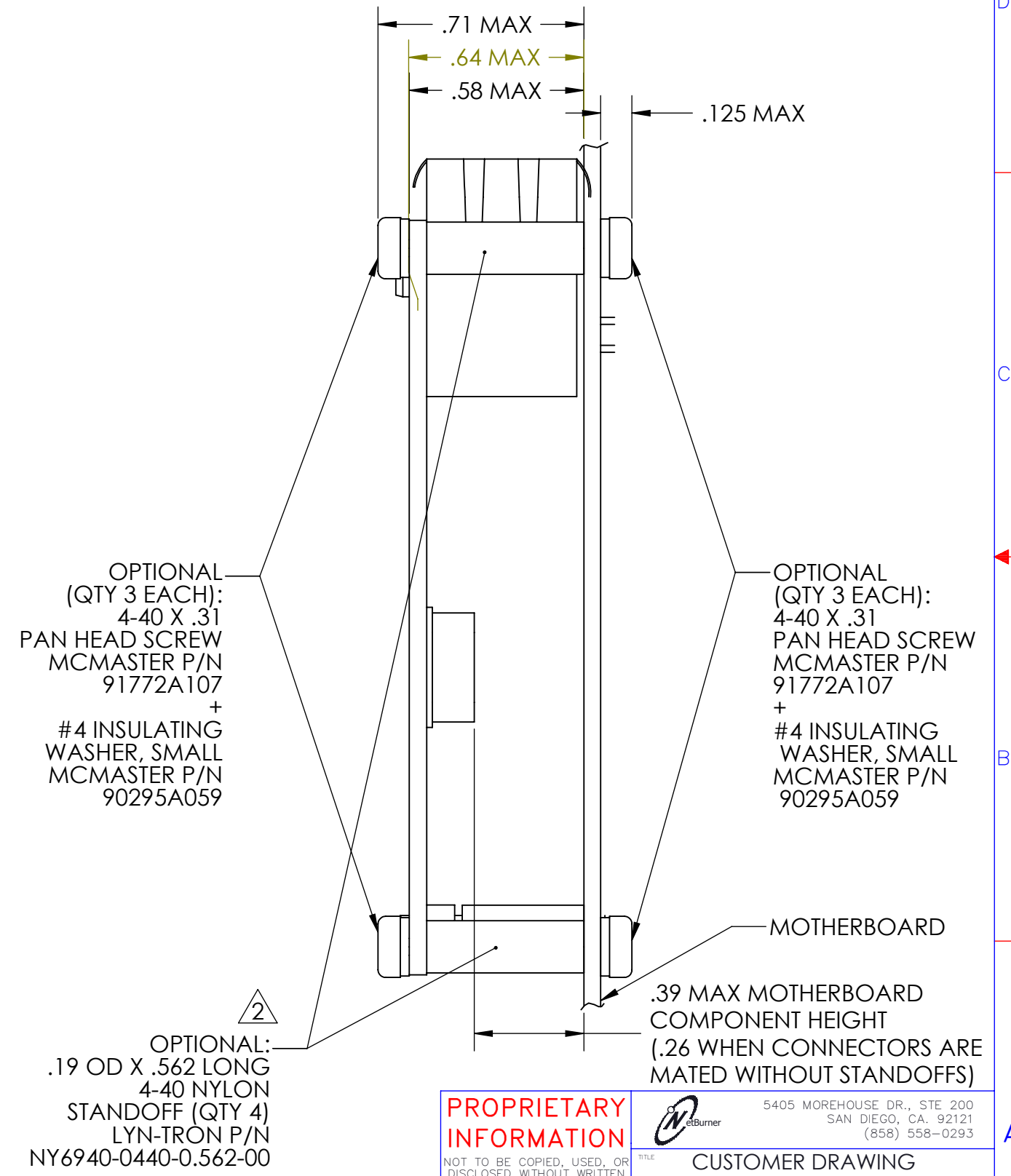
2 FOR MOTHERBOARD COMPONENT HEIGHT OTHER THAN .33:
STANDOFFS SHOULD BE OF A MINIMUM LENGTH TO ACCOMMODATE THE HEIGHT
OF THE MOTHERBOARD COMPONENTS PLUS .17 (ASSUMING NO COMPONENTS ARE
UNDER THE RJ-45 CONNECTOR).

3 MATING CONNECTORS OR SOCKETS SHOULD ACCOMMODATE THE APPROPRIATE RANGE OF
PIN INSERTION DEPTH. THE RANGE IS DEPENDENT ON STANDOFF LENGTH AND CONNECTOR HEIGHT.
ASSUMING THE TOTAL TOLERANCE FOR THESE DIMENSIONS IS $\pm .010$, THE MINIMUM PIN INSERTION
DEPTH WOULD BE $\{ .31 + \text{CONNECTOR HEIGHT} - \text{STANDOFF LENGTH} \}$. THE MAXIMUM DEPTH WOULD
BE .05 GREATER THAN THE MINIMUM.

APPLICATION SAMPLE 2 MOTHERBOARD, .33 COMPONENT HEIGHT UNDER MODULE.



COMPONENT SIDE OF MOTHERBOARD SHOWN



PROPRIETARY INFORMATION NOT TO BE COPIED, USED, OR DISCLOSED WITHOUT WRITTEN PERMISSION FROM NETBURNER	5405 MOREHOUSE DR., STE 200 SAN DIEGO, CA. 92121 (858) 558-0293		
	TITLE: CUSTOMER DRAWING MODEL SB70LC-100IR		
CAD/CAM DRAWING DO NOT MANUALLY REVISE OR UPDATE	SIZE: B SCALE: 2:1	FSCM: 850380 DRAWING NUMBER	REV: D SHEET 3 OF 3