



SBL2eXA Network Device User's Manual

Table of Contents

Table of Contents	2
1. Overview	5
1.1 Serial, Digital I/O, and A/D Operation.....	6
2. IPSetup Software Utility	6
3. Initial Configuration	6
3.1 Hardware Configuration.....	7
3.2 Network Configuration.....	7
3.3 Operational Configuration	8
4. Web Page Configuration	9
4.1 Network IP Settings Configuration	9
4.2 Incoming TCP Settings (Server Mode)	10
4.3 Outgoing TCP Settings (Client Mode).....	11
4.4 UDP Mode Settings	12
4.5 Custom Packetization	13
5. Serial Settings	14
6. Password Settings	15
7. Multi-Function Pin Control	16
7.1 GPIO Settings	16
7.2 GPIO Network Server Settings	17
7.3 Multi-Function Pin Control.....	17
7.4 Command Syntax	18
7.5 Machine Command Mode	20
7.6 Machine Command Examples.....	21
7.6.1 Set Pins 14 and 15 to GPIO Outputs	21
7.6.2 Set All GPIO Pins as Inputs and Readback.....	21
7.6.3 Read A/D Inputs	21
8. AT Commands	22
8.1 Enter and Exit Command Mode.....	22
8.2 Command Syntax	23
8.3 System/Network Configuration	23
8.4 Serial Port Configuration	24
8.4.1 Custom Packetization.....	25
8.5 GPIO Server and Analog-to-digital Read-back	26
8.6 AT Command Examples	27
8.6.1 Changing the System IP Address	27
8.6.2 Configuring the Serial Server Listen Port	27

8.6.3	Configure Outgoing Network Client Connection.....	27
8.6.4	Read Analog-to-digital Input Channel 1	28
8.6.5	Change Pin to GPIO and Set Output to High	28
9.	LEDs.....	29
10.	Network IP Address Configuration	29
11.	Web Browsers and Proxy Servers	30
12.	Testing with a Telnet Connection.....	30
13.	Telnet to Serial Test Procedure.....	31

Revision History

1.0	10/12/2010	Initial release.
1.01	12/02/2010	Added more information to the table in the "Serial Settings" section concerning the AT command set options; removed all references to RS-485 half/full-duplex support as of PCB revision 1.2 for the SBL2eXA; fixed data bit options under the "AT Commands → Serial Port Configuration" section to include 5 and 6 data bits; expressly indicated that RTS/CTS hardware flow control is only available for Serial Port 0; fixed step 3 of section 3.2 to reference "Network IP Address Configuration", not "Selecting an IP Address"; made other trivial updates to the document.

1. Overview

The NetBurner SBL2eXA network device provides a 10/100 Mbps Ethernet connection, serial-to-Ethernet, digital input/output (I/O), and analog-to-digital (A/D) capabilities, as well as additional features available through custom programming.

The SBL2eXA is pre-programmed with the NetBurner factory application providing all the functionality needed for most applications.

Hardware Features:

- 10/100 Mbps Ethernet
- DB-15 interface connector
- Up to two serial ports: UART 0 RS-232 and UART 1 3.3-Volt LVTTL
- Up to four 12-bit analog-to-digital converter (ADC) inputs
- Up to eight LVTTL digital I/O
- I²C (requires development kit)
- Digital timer input (requires development kit)
- 5 to 24 Volts DC input power
- Industrial temperature range of -40 C to +85 C

Pre-programmed Factory Application Features:

- Serial-to-Ethernet capability through TCP or UDP
- Custom data packetization options
- Web page configuration
- AT command set configuration and operation
- Digital I/O control
- Analog-to-digital inputs

Features Requiring Development Kit:

- I²C interface
- Digital timer input

Pin	Function	GPIO	Description	Max Voltage
1	U0 TX	-	UART 0 Transmit	RS-232
2	U0 RX	-	UART 0 Receive	RS-232
3	U0 CTS	-	UART 0 Clear to Send	RS-232
4	U0 RTS	-	UART 0 Request To Send	RS-232
5	Vout	-	3.3VDC Output 100mA Max	3.3VDC
6	GND	-	Ground	-
7	AN0	Yes	Analog to Digital Converter 0	3.3VDC
8	AN1	Yes	Analog to Digital Converter 1	3.3VDC
9	AN2	Yes	Analog to Digital Converter 2	3.3VDC
10	AN3	Yes	Analog to Digital Converter 3	3.3VDC
11	DTIN0	Yes	Digital Timer In 0	3.3VDC
12	U1 RX	Yes	UART 1 Receive	3.3VDC
13	U1 TX	Yes	UART 1 Transmit	3.3VDC
14	SCL	Yes	I2C Clock	3.3VDC
15	SDA	Yes	I2C Data	3.3VDC

DB-15 Connector Signals

1.1 Serial, Digital I/O, and A/D Operation

The factory application sets up three listening network sockets in the default configuration:

1. Listen for incoming connections for serial port 0 (default port 23)
2. Listen for incoming connections for serial port 1 (default port 24)
3. Listen for incoming connections for digital I/O and A/D (default port 1000)

This guide will provide descriptions on the various methods to control and/or monitor functions for these three categories.

2. IPSetup Software Utility

Setup and configuration of your SBL2eXA requires the Windows-based "IPSetup.exe" utility available for download at www.netburner.com in the Support → Public Downloads section: http://www.netburner.com/support/public_downloads.html

3. Initial Configuration

Before you can start using your SBL2eXA, three areas of configuration need to be set up: the serial interface to be used, the network IP address of the module, and configuration through the application web page interface.

1. Hardware configuration
2. Network configuration
3. Operational configuration

3.1 Hardware Configuration

The SBL2eXA has two asynchronous UART type serial ports, referred to as Port 0 and Port 1:

Port 0 signals (RS-232 level): TX, RX, CTS, RTS
Port 1 signals (3.3V LVTTL level): TX, RX

The debug serial port, or "debug port" for short, is used to display status messages from the application. If your application needs only a single serial port, then we recommend setting the other serial port to "DEBUG".

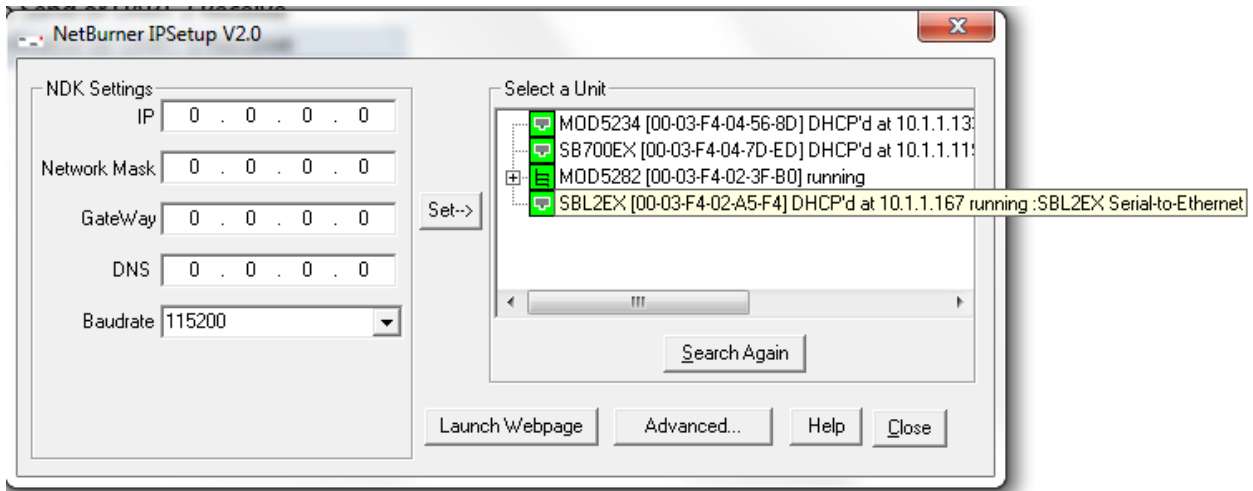
3.2 Network Configuration

1. Run the "IPSetup" configuration utility by double-clicking its icon. This program is located on the SBL2e product page at www.netburner.com. To view the advanced settings, click on the "Advanced..." button (the button name will then change to "Basic <<"). In this example, UART 1 is used as the monitor port (screen shot below).
2. Locate your SBL2eXA in the "Select a Unit" list box by matching its MAC address. The MAC address is located on the bottom of your SBL2eXA device. If your SBL2eXA device does not appear in the list box, verify that the Ethernet speed/link LEDs are illuminated and then click the "Search Again" button. If you are still unable to see your SBL2eXA, disconnect power and correct any cabling errors, reconnect power, and then click the "Search Again" button. Note that "IPSetup" uses a UDP broadcast protocol, and therefore will not operate through a router to the Internet.

Firewalls: "IPSetup" uses UDP and TCP port number 20034. If your computer's firewall is blocking this port number, then you will need to either disable the firewall or add a rule to the firewall to allow communication on this port number.

3. If your network supports DHCP (factory default): the assigned IP address will appear in the "Select a Unit" list box – write down this address. If your network does not support DHCP, then configure the IP and network mask fields as shown in the screen shot below. If you need help selecting values, please read the "Network IP Address Configuration" section located near the end of this guide. After you have entered all of your values, click the "Set→" button in the center of the "IPSetup" window to configure your SBL2eXA with its new parameters. Note that if you do not click the "Set→" button, your values will not be saved to the target platform selected. If you have multiple NetBurner devices, make sure you select your SBL2eXA in the "Select a Unit" list box (as shown in the screen shot) before you enter your information.

A screen shot of "IPSetup" is shown below:



3.3 Operational Configuration

Once the network parameters are set, the web server interface or serial AT commands can be used to modify the settings of the SBL2eXA device. We recommend using the web server interface first to become familiar with the operation of the SBL2eXA. To access the web page, click on the "Launch Webpage" button in "IPSetup" or open a web browser and enter the numeric IP address of the device in the address bar (e.g., <http://10.1.1.110>).

4. Web Page Configuration

Once the IP address for the device is set, the SBL2eXA web server becomes accessible to set the serial and network settings. The most common use of the SBL2eXA is as a serial-to-Ethernet device with the added functionality of analog-to-digital and digital I/O. The "IP Settings" section on the "Network" configuration page is required for network operation of any kind, even if serial-to-Ethernet will not be used. The remaining sections of the "Network" configuration page are specific to serial-to-Ethernet operation.

1. **TCP server:** Listen for incoming TCP connections.
2. **TCP client:** Connect to a target network address when serial data is available, or you can also establish a network connection on power-up.
3. **UDP:** Send and receive using UDP packets.

4.1 Network IP Settings Configuration

The first section of the "Network" configuration page is used to select DHCP or static IP addressing. If you select DHCP, and you have a DHCP server on the network, the DHCP-assigned values will be displayed under the "DHCP Values" column. To select a static IP address, change the "Addressing mode" to "Static", and enter your values in the fields under the "Static Settings" column.

Network		
Device Name for DHCP:	<input type="text" value="SBL2EXA-87A2"/>	
Addressing Mode:	<input type="text" value="DHCP"/>	
<u>IP Settings</u>	<i>Static Settings</i>	<i>DHCP Values</i>
Device IP address:	<input type="text" value="0.0.0"/>	10.1.1.220
Device subnet mask:	<input type="text" value="0.0.0"/>	255.255.255.0
Device gateway:	<input type="text" value="0.0.0"/>	0.0.0.0
DNS server:	<input type="text" value="0.0.0"/>	0.0.0.0
Ethernet link:	<input type="text" value="Normal"/>	Power cycle required after changing

Device name for DHCP	Specify the device name to send to the DHCP server if available.
Addressing mode	Select between DHCP and static IP address modes.
Device IP address Device subnet mask Device gateway DNS server	If the addressing mode is set to DHCP, then the DHCP server (if available) will provide these values, which will be displayed in the "DHCP Values" column. If you wish to specify these values yourself, then set the addressing mode to "Static" and type the values in the fields below the "Static Settings" column. Note that if a gateway or DNS server is not specified, then the device will not be able to communicate outside the local area network (LAN).
Ethernet link	"Normal" is auto-negotiation. You may also force 10 or 100 Base-T half-duplex modes.

4.2 Incoming TCP Settings (Server Mode)

This section configures the SBL2eXA as a network device server which listens for incoming TCP connections (or UDP packets if enabled) for each serial port.

Incoming TCP Settings	PORT 0	PORT 1
Listen for incoming network connections:	<input checked="" type="checkbox"/>	<input checked="" type="checkbox"/>
Listening network port:	23	24
Timeout & disconnect after this many seconds of inactivity:	60	60
Allow new connection if existing connection has been idle for this many seconds:	30	30

Listen for incoming network connections	Check the box to enable the listening port to wait for incoming TCP connection requests or UDP packets. Note that checking the box will override the client mode.
Listening network port	Listen for incoming connections on the given port. The default port is 23 (also the default Telnet port) on Port 0, and 24 on Port 1. The listening port numbers for Ports 0 and 1 must be different.
Timeout and disconnect after this many seconds of inactivity	Terminate the connection if no incoming network data or outgoing serial data has passed for the number of given seconds since the last data pass. This is useful since there is no way to detect if a client has crashed or abnormally terminated unless unacknowledged data exists and times out. A value of '0' disables this feature. This field has no effect in UDP mode.
Allow new connection if the existing connection has been idle for this many seconds	This is similar to the timeout-and-disconnect, but does not disconnect until a new connection is requested. A value of '0' disables this feature. This field has no effect in UDP mode.

4.3 Outgoing TCP Settings (Client Mode)

Outgoing TCP Settings		
Make outgoing connections:	Never	Never
Connect on network port:	1000	1001
Connect/send to this address:	(Enter IP address)	(Enter IP address)
Timeout & disconnect after this many seconds of inactivity:	60	60
Retry failed outgoing connection after this many seconds:	10	10

Make outgoing connections	Select between connecting on power-up for a permanent connection, or make a connection only when serial data becomes available. This feature has no effect on UDP.
Connect on network port	Specify the destination TCP or UDP port number.
Connect/send to this address	Specify the destination IP address for TCP or UDP. When using UDP, an address and port number must be specified in this section, or check the box to enable "Learn UDP reply address" under the "UDP Mode Settings" section.
Timeout and disconnect after this many seconds of inactivity	Terminate the connection if no incoming network data or outgoing serial data has passed for the number of given seconds since the last data pass. This is useful since there is no way to detect if a client has crashed or abnormally terminated unless unacknowledged data exists and times out. A value of '0' disables this feature. This field has no effect in UDP mode.
Retry failed outgoing connections after this many seconds	Wait a given number of seconds before retrying an outgoing connection if it fails. This feature has no effect in UDP mode.

4.4 UDP Mode Settings

Unlike TCP, UDP is a connectionless protocol. The SBL2eXA provides two methods to determine the destination network IP address: you can either specify an IP address manually, or use the source IP address of the last received UDP packet by checking the "Learn UDP reply address" box.



Use UDP instead of TCP	Check the box to enable UDP communication mode.
Learn UDP reply address	Check the box to send received serial data to the source IP address that sent the last received UDP packet. This is useful for clients that may have changing IP addresses. If not using this feature, then the destination IP address and port number must be specified in the "Outgoing TCP Settings" section.

4.5 Custom Packetization

Custom packetization can apply to TCP or UDP communication.

Custom Packetization

Enable custom packetization logic:

Number of characters to accumulate before sending TCP/UDP packet (128 max):

Number of milliseconds to wait for accumulated characters (0 waits forever):

Flush TCP/UDP frame when this character is received (enter "NA" to disable):

Use custom packetization logic	Enable (check) or disable (uncheck) custom packetization settings.
Number of characters to accumulate before sending TCP/UDP packet	This is the number of incoming characters to accumulate from the serial port before sending them out through the network port. This setting is overridden if the accumulation wait time setting (next option below) expires.
Number of milliseconds to wait for accumulated characters ('0' waits forever)	This is the maximum time in milliseconds to wait for received serial characters before sending the accumulated data, if any, out the network port.
Flush TCP/UDP frame when this character is received (Enter "NA" to disable)	Send all accumulated serial data upon receipt of the given character from the serial port. Enter the decimal value of the character to be recognized. For example, the decimal representation for the "LF" (line feed) character is 10.

5. Serial Settings

Serial		
	PORT 0	PORT 1
Data port setting (if both are debug, then default is port 0):	RS-232 ▾	RS-232 (TTL) ▾
Data baud rate:	115200 ▾	115200 ▾
Custom baud rate:	0	0
Data bits:	8 ▾	8 ▾
Stop bits:	1 ▾	1 ▾
Parity mode:	None ▾	None ▾
Flow control mode:	None ▾	None ▾
Allow AT commands:	<input checked="" type="checkbox"/>	<input checked="" type="checkbox"/>
AT attention command char:	43 (+)	43 (+)

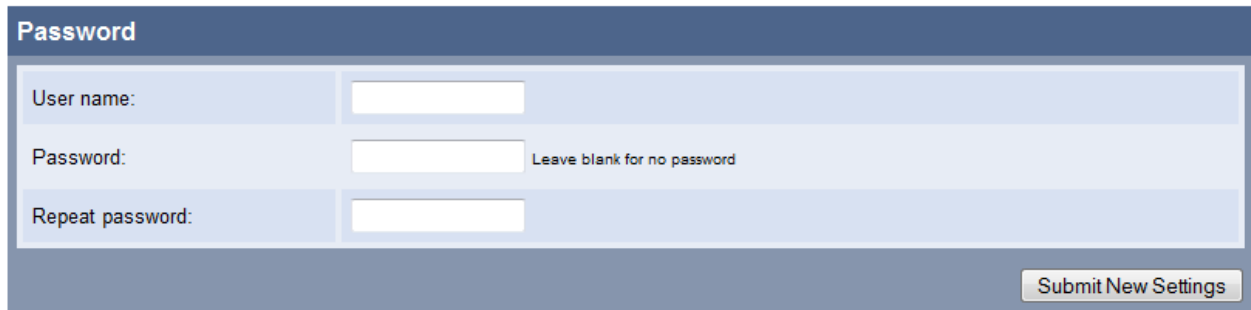
[Submit New Settings](#)

The SBL2eXA provides one RS-232 level UART (Port 0) and one 3.3V LVTTL UART (Port 1). The data port setting "DEBUG" specifies whether to use the serial port as stdin, stdout, and stderr for serial status messages or debugging. Both ports cannot be set to "DEBUG" at the same time. If this happens, only Port 0 becomes the debug port.

Data port setting (if both are debug, then default is port 0)	Select the serial communication mode. Both Port 0 and 1 support the same options with the difference being that Port 0 brings out its signals through an RS-232 level shifter and Port 1 brings its signals out as 3.3V LVTTL.
Data baud rate	Set the serial baud rate in bits per second.
Custom baud rate	Use for non-standard baud rates by typing in the baud rate value as a decimal number (in bits per second). "Custom" must be selected in the "Data baud rate" field in order for this custom baud rate to take effect.
Data bits	Number of data bits (5, 6, 7, or 8).
Stop bits	Number of stop bits (1 or 2).
Data parity	Set the serial parity (odd, even, or none).
Flow control	Set to "None" for no flow control. Flow control is valid only for RS-232 mode, where both serial ports support XON/XOFF software flow control, but only Port 0 supports RTS/CTS hardware flow control.
Allow AT commands	Enable/disable the use of serial AT commands.
AT attention command char	Specify the decimal representation of the character to use to enter AT command mode. The default is the industry standard '+' character (its decimal value is 43).

6. Password Settings

Use the "Password" settings screen to enable, disable, or change an existing password. Only one password is allowed. To clear a password, leave the fields blank and then click on the "Submit New Settings" button.



The screenshot shows a web form titled "Password" with a dark blue header. The form contains three input fields: "User name:", "Password:", and "Repeat password:". The "Password:" field has a small text label "Leave blank for no password" to its right. A "Submit New Settings" button is located at the bottom right of the form.

Password	
User name:	<input type="text"/>
Password:	<input type="text"/> Leave blank for no password
Repeat password:	<input type="text"/>

7. Multi-Function Pin Control

7.1 GPIO Settings

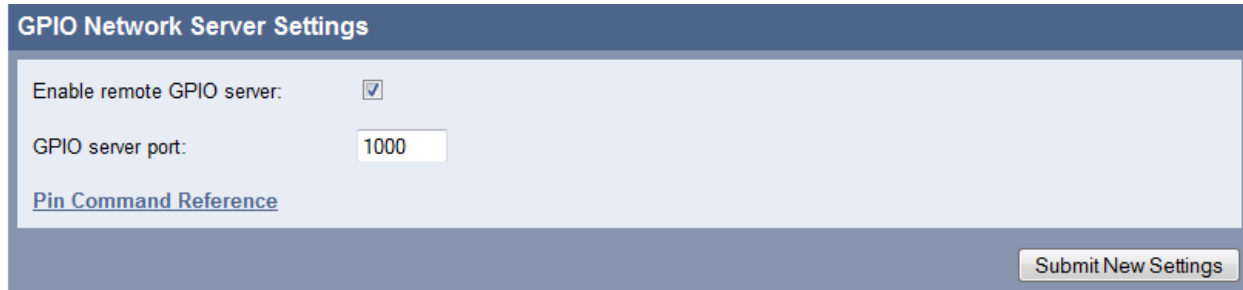
The 15-pin interface connector of the SBL2eXA has 11 signals with multiple functions, such as digital general-purpose I/O, analog-to-digital conversion, and serial hardware handshaking. The "GPIO Settings" configuration web page enables you to select the power-up setting of the multi-function pins.

GPIO Settings			
Pin Number	Pin Usage	Power-up Pin Settings	Current Setting
1	UART 0 TX RS-232	Fixed	Fixed
2	UART 0 RX RS-232	Fixed	Fixed
3	UART 0 CTS RS-232 / GPIO In	Uart 0 CTS ▾	Uart 0 CTS
4	UART 0 RTS RS-232 / GPIO Out	Uart 0 RTS ▾	Uart 0 RTS
5	3.3 Vcc	Fixed	Fixed
6	Ground	Fixed	Fixed
7	AD0 / GPIO	AD0 A/D ▾	AD0
8	AD1 / GPIO	AD1 A/D ▾	AD1
9	AD2 / GPIO	AD2 A/D ▾	AD2
10	AD3 / GPIO	AD3 A/D ▾	AD3
11	DTIN0 / GPIO	GPIO In ▾	GPIO In=1
12	UART 1 RX / GPIO	UART 1 RX ▾	Uart 1 Rx
13	UART 1 TX / GPIO	UART 1 TX ▾	Uart 1 Tx
14	UART 2 TX / GPIO	GPIO In ▾	GPIO In=1
15	UART 2 RX / GPIO	GPIO In ▾	GPIO In=1

Enable high current drive (low = 2 mA; high = 10 mA):

7.2 GPIO Network Server Settings

Control and read-back of the GPIO and A/D signals is accomplished by making a TCP connection to the listening port number, which is port "1000" by default. Once connected, the multi-function pin control commands (see next section) are used to control or read the various signals. As a quick test, you can use Telnet to log into the network server and test the pin control commands.



The screenshot shows a web interface titled "GPIO Network Server Settings". It features a dark blue header with the title in white. Below the header is a light blue form area. The form contains two settings: "Enable remote GPIO server:" with a checked checkbox, and "GPIO server port:" with a text input field containing the value "1000". Below these settings is a blue underlined link labeled "Pin Command Reference". At the bottom right of the form area is a button labeled "Submit New Settings".

7.3 Multi-Function Pin Control

In addition to serial-to-Ethernet capabilities, the SBL2eXA provides external control and read-back functionality for the general-purpose input/outputs and analog-to-digital inputs.

- The function of each multi-function pin is set in the GPIO configuration web page (GPIO is the most common function).
- The "GPIO Network Server" on the SBL2eXA listens on the TCP port number specified in the "GPIO server port" field. For a quick test, you can use the Telnet utility: "telnet <IP address> 1000" for the default port of 1000.
- Some of the pins are fixed, but are shown for reference.
- The pin configurations can only be done through the GPIO configuration web page or through serial AT commands.
- Access to the pin functions can only be done through a TCP connection to the GPIO network server – not the serial port.

7.4 Command Syntax

Once a TCP connection is established to the GPIO network server, the following commands can be used, where "xx" is a value from 03 to 15. All commands and queries must be terminated by a line feed character ["LF" = 10 (decimal) = 0xA (hexadecimal)]. You may also terminate with a carriage return ["CR" = 13 (decimal) = 0xD (hexadecimal)] and a line feed; the carriage return will be ignored by the parser.

General-purpose I/O functions:

Pxx=0	Set pin output low.
Pxx=1	Set pin output high.
Pxx=I	Set pin as input.
Pxx?	Read the pin input value. Note that this command will automatically program the pin as an input. The value of an output pin cannot be read. The return value is 0 or 1 in the format: "0, OK\r\n" or "1, OK\r\n".

Examples:

"P14=0\n" Returns "0, OK\r\n"

"P15?\n" Returns "1, OK\r\n" if the pin is logic high

Analog-to-digital functions:

Pxx?	Read the pin input value. The value read is a number from 0 to 4095 representing the number of counts. The counts represent a ratiometric value to the 3.3-Volt reference voltage. The maximum voltage input is 3.3 Volts.
------	--

Example:

"P07?\n" Returns "1234, OK\r\n" if the number of counts read was 1234.

Network Functions:

X	If a TCP client application, such as Telnet, sends an 'X', then the connection with the GPIO network server will be terminated.
---	---

Example:

"X\n" Returns "0, Closing\r\n"

Character Echo:

This command echoes characters back to the TCP client. Echo is disabled by default.

E	Enable echo.
e	Disable echo.

Example:

"E\n" Returns "0, Echo on\r\n"

Firmware version :

V	Query firmware version.
---	-------------------------

Example:

"V\n" Returns "0, Firmware Version: SBL2EXA v1.02 Dec 2 2010\r\n"

Command and query return strings:

Each command and query will return an integer value followed by a ',' and optional text to provide details on the response.

- Any successful command will return: "0, OK\r\n".
- Any command error will return a negative number, followed by an explanation of the error. For example, sending the command "abcd\n" returns: "-3, Syntax Error\r\n".
- Any read-back/query response will be the value of the read-back followed by the status. For example, sending "P07?\n" could return "2034, OK\r\n". The value 2034 is the number of counts in decimal representation.
- Any read-back/query response that generates an error will return a negative number instead of the read-back value.

Error codes:

-1	Pin not in GPIO mode
-2	Invalid pin number
-3	Command syntax error

7.5 Machine Command Mode

The machine command mode is so named because the data sent and received are in hexadecimal or binary, as opposed to the AT command mode, which is more of a human-readable text syntax format. All non-programmable pins such as power, ground, and /RSTI will read back as zero and programming commands will have no effect on them.

Syntax:

- All commands are terminated with the line feed character (0x10 in hexadecimal representation; also represented as '\n' in the C language). The carriage return character (0x13 or '\r') is ignored, so commands may be terminated with '\n' or "\r\n".
- Command parameters are in hexadecimal format, with the most significant bit (MSB) first.

Return values:

- Commands to set parameters will return a status value of 0 on success, or 1 for a syntax error.
- Commands that return values will be in the format: "<status>,<result>", where status is 0 (success) or 1 (syntax error) and the result is one or more hexadecimal values, depending on the command. Hexadecimal values display the most significant bit first.
- Return values are terminated by "\r\n".

Command summary:

MGxxxx	GPIO enable – Set the pin configuration: primary function (0) or GPIO mode (1).
MG	GPIO enable query – Return the pin configuration values.
MRxxxx	GPIO direction – Set the GPIO pin direction: input (0) or output (1).
MR	GPIO direction query – Return the GPIO pin direction values.
MOxxxx	GPIO output set – Set individual GPIO output pins: low (0) or high (1).
MO	GPIO output query – Return the programmed state of all GPIO output pins.
MH	Set all GPIO output pins high (1).
ML	Set all GPIO output pins low (0).
MP	Save current settings as the initial power-on state.
MQ	Query all A/D and GPIO values.
MT	Terminate the GPIO command TCP connection.
M?	Return all GPIO input and output pin values: low (0) or high (1).

7.6 Machine Command Examples

7.6.1 Set Pins 14 and 15 to GPIO Outputs

```
MG6000 // Set both pins to function as GPIO
0 // Return value of 0 for success
MR6000 // Set the direction of both GPIO pins to be outputs
0 // Return value of 0 for success
MO6000 // Set the output state of both GPIO pins to be high (1)
0 // Return value of 0 for success
MO // Query all output pin values
0,0x6000 // Success, driving outputs high on pins 14 and 15
MO4000 // Set pin 15 low (0) and pin 14 high (1)
0 // Return value of 0 for success
MO // Query all output pin values
0,0x4000 // Success, driving output low on pin 15 and high on pin 14
M? // Query all input and output pins
0,0x5BCC // Success, pin 15 is low, pin 14 is high, and the remaining
// pins report input values
```

7.6.2 Set All GPIO Pins as Inputs and Readback

```
MG7BCC // Set all multi-function pins to GPIO
0 // Return value of 0 for success
MR0000 // Set the direction for all GPIO pins to be inputs
0 // Return value of 0 for success
M? // Read all GPIO input pin values
0,0x3BCC // Return value of 0 for success (note that pins are floating
// inputs on SBL2E development board)
```

7.6.3 Read A/D Inputs

```
MGFC3F // Set the 4 A/D pins to their primary function (A/D inputs)
0 // Return value of 0 for success
MQ // Read the A/D inputs
```

```
// 0 = success; first 4 16-bit hex values are A/D readings for pins 7, 8,
// 9, and 10; last 16-bit hex value is the reading for all GPIO inputs
0,0x4F38,0x4910,0x42A0,0x4FE0,0x3BCC
```

8. AT Commands

As an alternative to the web page configuration, you can configure the SBL2eXA over a serial port using the AT command format. The configuration sequence is:

1. Enter command mode.
2. Send configuration change commands.
3. Save changes and exit.

The AT command operation is different for configuration commands versus programming GPIO pins with machine commands. Please refer to the “GPIO Server and Analog-to-digital Read-back” sub-section for additional details.

8.1 Enter and Exit Command Mode

The AT command configurations can only be processed when the SBL2eXA is in AT command mode.

To enter AT command mode:

1. Pause for 1 second (send no data).
2. Send "+++".
3. Wait for 1 second.
4. The device will respond with “\r\nOK”.

To exit AT command mode:

1. Wait 30 seconds for time-out; any changes will be lost.
2. Send "AT&X" or "ATO" to exit and discard any changes.
3. Send "AT&P" to exit and save new settings.
4. Send "AT&F" to reset all settings to factory default.

Returns:

- 1 – Returning to active connection.
- 2 – Returning to listening connection.
- 3 – Returning to active UDP mode.
- 0 – Returning to idle.

Exiting AT command mode with any changes terminates all existing TCP connections.

8.2 Command Syntax

The following is the format for an AT command:

```
AT#<command>=<parameter>,<parameter>,...<cr>
```

The following is the format for an AT command query:

```
AT#<command>?<cr>
```

Syntax rules:

- All white space outside quotations are ignored.
- All commands and queries are terminated by a carriage return <CR> (13 in decimal representation). If a line feed <LF> follows a <CR>, it will be ignored.

8.3 System/Network Configuration

Example: AT#SYSIP=10.1.1.100<cr>

```
#SYS
```

```
IP=<IP address>
MK=<Mask IP>
GW=<Gateway IP>
DN=<DNS IP>
DH=1 // To enable DHCP, set IP to 0.0.0.0
NB=<device name>
UN=<string>
PW=<string>
GS=<enable/disable GPIO server> // 0 = disable, 1 = enable
GP=<GPIO server listening port>
```

```
#CUR // Get current active values
```

```
IP?
MK?
GW?
DN?
ST? // Return port status for current port
S0? // Return port status for port 0
S1? // Return port status for port 1
```

Return values:

- Connected to IP X.X.X.X
- Listening on port XX
- UDP mode with learned send-to IP Address: X.X.X.X
- UDP mode send -to address: X.X.X.X
- Idle

8.4 Serial Port Configuration

Example: AT#SER0LN=0<cr>

```
#SERn          // n = serial port number: 0, 1
NP=<T|U|L>     // Net protocol: T = TCP, U = UDP, L = UDP learn
SM=<R|D>       // R = RS232 (RS232 TTL for Port 1), D = DEBUG
LN=<0|1>       // 1 = listen for connection, 0 = don't listen
BR=<baud rate> // Baud rate value in bits per second
DB=<data bits> // 5, 6, 7, or 8
PR=<N|O|E>     // Parity: none, odd, even
ST=<stop bits> // 1 or 2
FL=<N|S|H>     // Flow control: none, software, or hardware (Port
                // 0 only)

SP=<listening network port number>
SD=<disconnect time-out in seconds>
SO=<time-out in seconds before allowing new connection>

CM=<N|P|R>     // Outgoing connection mode: never (listen mode
                // only), power-up, or upon received serial data

CI=<destination IP name/address>
CP=<destination port number>
CD=<disconnect time-out in seconds>
CR=<retry time-out in seconds after failed connection>
```

8.4.1 Custom Packetization

The custom packetization settings provide control on when serial data is converted into TCP/UDP packets and then sent to the destination network host. You can configure the SBL2eXA to send serial data after a certain number of characters have been received, after a certain amount of time has expired, or upon receipt of a specific character.

Example: `AT#SER0LNPE=1<cr>` // Enable packetization options

`PE=<0 | 1>` 0 = disable packetization, 1 = enable

`PN=<1-128>` Number of serial characters to accumulate before sending a packet.

`PT=<0-32768>` Number of milliseconds to wait since last character before sending a packet. A value of '0' waits forever.

`PC=<hex char>` Sends all accumulated serial data upon receipt of a specified ASCII character. The character value must be entered as a hexadecimal number.

Return values:

A '?' at the end of the command will return the current setting. For example, "`AT#PE?<cr>`" will return a value of '0' or '1'.

8.5 GPIO Server and Analog-to-digital Read-back

In addition to the general system and serial configurations, you can also use AT commands to send commands and receive status information from the GPIO server. For example, you can set GPIO pins high or low, or read the analog-to-digital input pins.

A very important point to remember when accessing the GPIO and A/D pins is that the operations will occur immediately upon issuing the AT command. The typical sequence of events in this case is:

1. Enter command mode.
2. Send configuration change commands.
3. Exit command mode with "AT&X" or "ATO" to avoid losing any existing TCP serial connections.

Example: AT#P07?<cr> or AT#P07M=GPIO<cr>

```
#Pnn           // Where 'n' or "nn" is the pin number
#Pn
?              // Read a GPIO or A/D pin, error if pin not GPIO or A/D
=<0|1>         // Set GPIO pin high or low, error if pin not GPIO
M=<mode>       // Modes: GPIO, RX, TX, RTS, CTS, and AD
M?            // Read the current mode of the pin

#PD?          // Read the system pin's current drive level:
              //    0 = 2 mA, 1 = 10 mA

#PD=<1|0>      // Set the current drive level for all pins:
              //    0 = 2 mA, 1 = 10 mA
```

8.6 AT Command Examples

The following examples display the full transcript of serial communication of commands sent and replies received to and from the SBL2eXA. Commands are marked in **red**, and responses are marked in **blue**.

8.6.1 Changing the System IP Address

This example first queries the current IP address, and then changes the current IP to 10.1.1.79. Once the IP address change request is made, the settings are saved, and the device reboots.

```
+++  
OK>AT#CURIP?10.1.1.99  
OK>AT#SYSIP=10.1.1.79  
OK>AT&PIP Address Changed Rebooting  
  
Waiting 2sec(s) to start 'A' to abort
```

8.6.2 Configuring the Serial Server Listen Port

This example first queries the current TCP serial server listening port number, and then changes the current port number to 30. Once the port number change is made, the setting is saved. No system restart is required.

```
+++  
OK>AT#SEROSP?23  
OK>AT#SEROSP=30  
OK>AT&P2,Returning to listening connection
```

8.6.3 Configure Outgoing Network Client Connection

This example changes the client connection's IP address and port number. Once the changes are made, the settings are saved. No system restart is required.

```
+++  
OK>AT#SEROCI=10.1.1.78  
OK>AT#SEROCP=30  
OK>AT&P2,Returning to listening connection
```

8.6.4 Read Analog-to-digital Input Channel 1

This example reads the AD1 pin (pin 8). The value read is immediately returned.

```
+++  
OK>AT#P08?2248
```

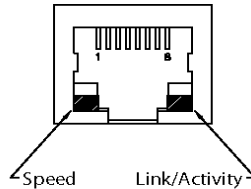
8.6.5 Change Pin to GPIO and Set Output to High

This example checks the current mode of pin 8, which indicates that it is in the primary mode function, AD1. The mode is updated to GPIO, and then set to a high state.

```
+++  
OK>AT#P08M?AD1  
OK>AT#P08M=GPIO  
OK>AT#P08M?GPIO In=1  
OK>AT#P08=1  
OK>
```

9. LEDs

- Ethernet speed LED on RJ-45: 10 Mbps (off) or 100 Mbps (on) – shown as the left LED from the oriented image shown below.
- Link/activity LED on RJ-45: Lights up to indicate link established; blinks to indicate traffic activity – shown as the right LED from the oriented image shown below.



10. Network IP Address Configuration

If you are part of a network that does not have a DHCP server present, then you will need to specify a static IP and network mask address. IP addresses are required to route packets from one point to another on an Intranet or Internet. If you are on your own local area network (LAN), then there are some standard private address ranges that you can use:

Class A: 10.0.0.0 to 10.255.255.255

Class B: 172.16.0.0 to 172.31.255.255

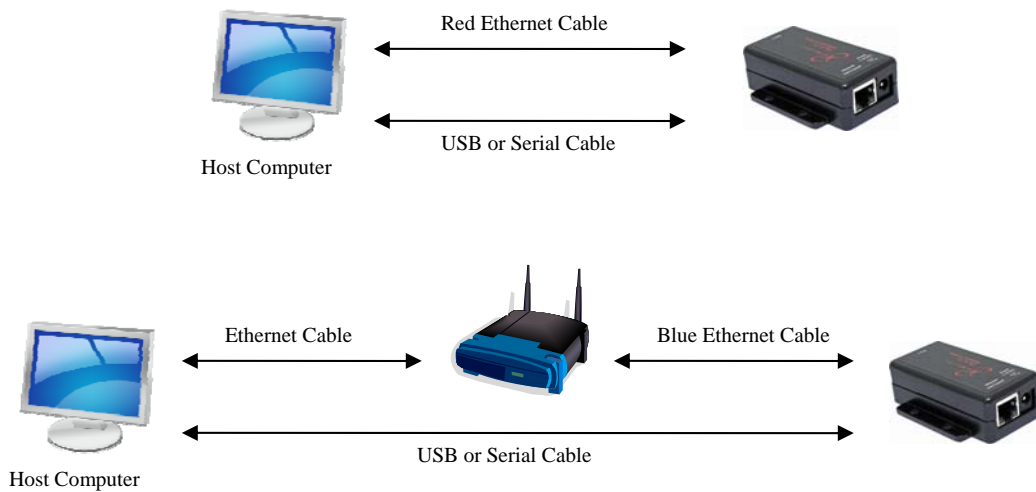
Class C: 192.168.0.0 to 192.168.255.255

11. Web Browsers and Proxy Servers

If you are working on a corporate LAN that uses a proxy server for Internet web browsing, then you will need to exclude the IP address of the SBL2eXA in your web browser's proxy server settings or preferences. Otherwise, an attempt to connect to a web page on the LAN will fail because the proxy server will attempt to route the request outside the LAN. For most web browsers, this can be accomplished in the advanced settings for the proxy server configuration. Set the network mask for your host computer's network adapter and your SBL2eXA to "255.255.255.0".

12. Testing with a Telnet Connection

A quick way to test the functionality of your serial-to-Ethernet connection is with the Telnet application made available in the Windows operating system and a serial terminal program, such as the NetBurner MTTY terminal application included on the CD-ROM. To run this test, configure your system as one of the two examples shown below. The red Ethernet cable is a cross-wired cable that can be used for a direct connection without the need of a network hub or switch. The blue Ethernet cable is a standard straight-through Ethernet cable that should be used if you have a network hub or switch.

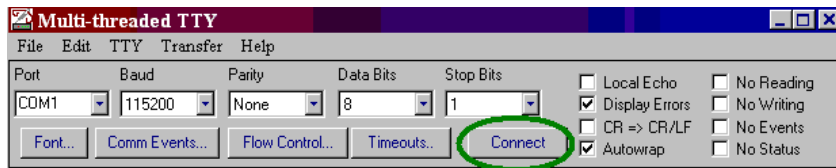


The objective of this example is to use a single host computer running Telnet and a serial terminal program to send data in either direction. When you type text in the Telnet window, it should appear in the serial terminal window and vice versa.

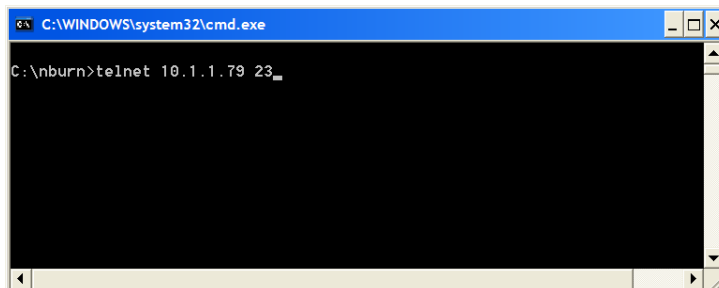
In the following example, an IP address of "10.1.1.79" is assigned to the SBL2eXA. Replace this IP address with the actual IP address of your SBL2eXA.

13. Telnet to Serial Test Procedure

1. Connect your hardware in one of the above configurations.
2. Open a command prompt window on your host computer.
3. Verify everything is connected correctly by executing the command "ping 10.1.1.79" and then press the <Enter> key on your keyboard (remember to substitute your actual IP address).
4. Run either HyperTerminal or MTTY. Set the baud rate to the value you assigned to the SBL2eXA during configuration (default is 115,200 bps). To use MTTY:
 - Run "MTTTY.exe" – you should see the screen below. The port setting is the PC serial communication port of your host computer.
 - Click the MTTY "Connect" button.



5. In the command prompt window, run Telnet by typing: "telnet 10.1.1.79 23" after the prompt, and press the <Enter> key. The value "23" is the network port number of the SBL2eXA that is listening for incoming connections. This example uses the default value of 23 for SBL2eXA serial port 0, which is connected to the USB serial interface and to SBL2eXA serial port 0. If you have modified the listening network port number in the SBL2eXA network web page, replace this port number with the listening port number that you assigned.



6. At this point, anything you type in the Telnet window should appear in the serial terminal window and vice versa.