

8

7

6

5

4

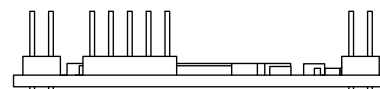
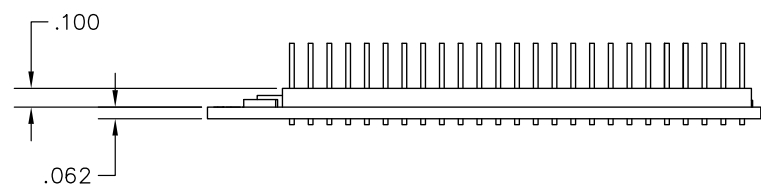
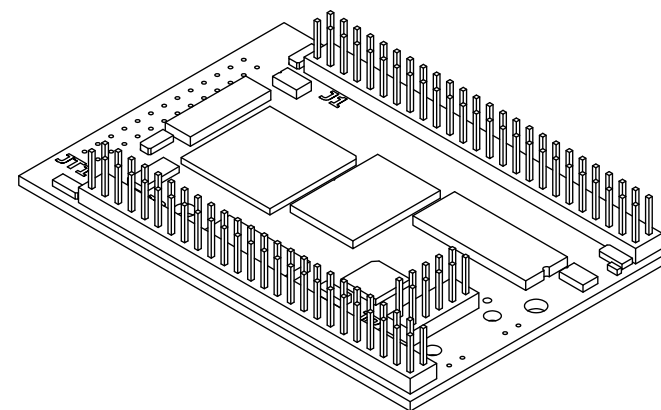
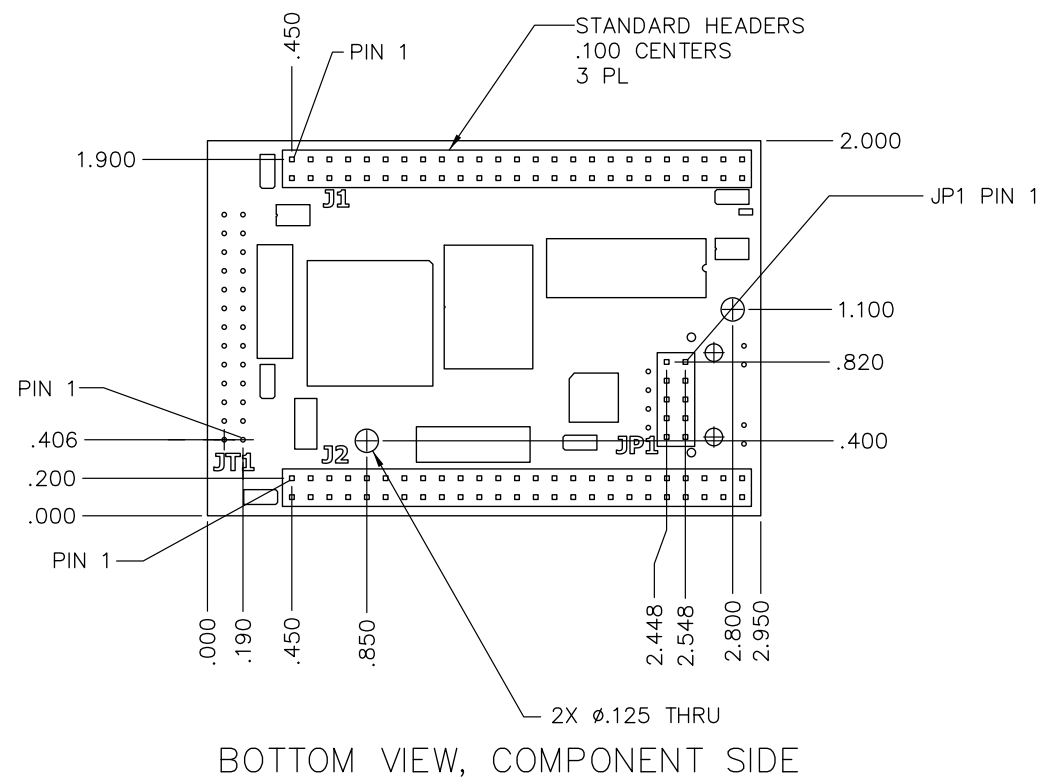
3

DWG. NO. 850321-001 SH 1 REV B

1

NOTES: UNLESS OTHERWISE SPECIFIED

REVISIONS				
ZONE	REV	DESCRIPTION	DATE	APVD
	A	INITIAL RELEASE	03/17/09	
	B	JP1 PIN 1 WAS AT 2.448	05/01/09	



BOTTOM VIEW, COMPONENT SIDE

<p>DO NOT SCALE DRAWING UNLESS OTHERWISE SPECIFIED DIMENSIONS ARE IN INCHES</p> <p>TOLERANCES: .x ± .1    .xx ± .02    .xxx ± .005 HOLE DIA UP TO .500    ±.002 HOLE DIA ABOVE .500    ±.013 ANGLES ± 0° 30'    MACHINED SURFACES</p>		<p><b>PROPRIETARY INFORMATION</b></p> <p>NOT TO BE COPIED, USED, OR DISCLOSED WITHOUT WRITTEN PERMISSION FROM NETBURNER</p>	<p>5405 MOREHOUSE DR., STE 200 SAN DIEGO, CA. 92121 (858) 558-0293</p>	
<p>PROJECT MANAGER PROJECT ENGINEER APPROVED</p> <p>APPROVED SAFETY APPROVED Q.A. CHECKED BY DRAWN BY: <i>E. Schick</i> 03/17/09</p>			<p>TITLE: <b>MOD5234-200IR</b></p>	
<p>NEXT ASSEMBLY</p>	<p>USED ON</p>	<p>CAD/CAM DRAWING DO NOT MANUALLY REVISE OR UPDATE</p>	<p>SIZE: <b>D</b></p>	<p>FSCM</p>
<p>APPLICATION</p>		<p>SCALE: 2/1</p>	<p>DRAWING NUMBER: <b>850321-001</b></p>	<p>REV LTR: <b>B</b></p>
		<p>RELEASE DATE</p>	<p>SHEET 1 of 1</p>	

8

7

6

5

4

3

2

1